



District of
Hudson's Hope

British Columbia, Canada



Investment - Ready
Community Profile



NORTHERN BC BUSINESS ADVANTAGE

Northern British Columbia is a strategically located, resource-rich economy with many competitive advantages and incentives for business.



PACIFIC OCEAN

Hudson's Hope

- A Airport
- P Port
- 16 Highway

British Columbia has one of the most attractive investment climates for business in North America.

Manufacturers, for example, enjoy benefits such as:

- **Strong economic fundamentals** and market opportunities associated with major, long-term projects
- **Low Tax Rates** (personal and corporate) that rank BC among the lowest in Canada – complemented by sales tax exemptions on machinery and tax credits for research and development expenditures
- **Competitive Operating Costs** including low cost electricity relative to elsewhere in Canada or the US
- **Competitive Wage Rates** reflecting a balanced and growing labour pool
- **Growing Labour Supply** with government initiatives that are driving labour mobility into BC and training our existing workforce assets
- **Welcoming Communities** that keenly encourage new manufacturing and service investments
- **Financial Incentives** for capital investments and job creation in northern BC (up to \$5,000 per new job). *Contact Northern Development Initiative Trust.*

Welcome to Hudson's Hope

Hudson's Hope is located on the bank of the Peace River in the Rocky Mountain foothills of British Columbia, 90 kilometres west of Fort St. John and 66 kilometres north of Chetwynd on Highway 29. Through the commitment, cooperation, and participation of our residents, we are a uniquely progressive and safe community.

I'm delighted to invite visitors and business to Hudson's Hope, our community is experiencing the first boom since the building of the WAC Bennett Dam in the '60's.

Hudson's Hope prides itself in a wholesome lifestyle that is steeped in a rich history. Our beginnings go back to the fur trading days. Today industries are recognizing the abundance of natural resources and our community is welcoming a new era of growth. Our diverse employment opportunities and our deep sense of community have proven Hudson's Hope to be the place that has grabbed the attention of those looking for a bright future.

It is a wonderful safe and healthy environment to raise a family. The natural surroundings allows for year round recreational opportunities. We like to refer to Hudson's Hope as the "Playground of the Peace"; there are no limits when it comes to outdoor adventure.

On behalf of Council, I wish to extend a heartfelt welcome to everyone visiting or investing in our community, and I know that you will experience why we are proud to call Hudson's Hope your home.

Sincerely,

Karen Anderson

Mayor, District of Hudson's Hope



CONTENTS

1. Demographics	6
Population	6
Household Income	6
Household Income-Distribution	6
Workforce Education Attainment	7
Language Knowledge	7
2. Labour Force	8
Employment by Industry	8
Top Employers	9
Average Income By Occupation – Northern BC	10
Labour Force	11
Employment Rate	11
Labour Participation Rate	11
Commuting	11
3. Payroll Costs.....	12
Workers Compensation – 2011	12
Employment Insurance – 2011	12
Social Insurance (Canada Pension Plan) – 2010	13
4. Higher Education	14
Post-Secondary Institutions	14
Training Services	14
5. Transportation	15
Major Transportation Routes	15
The North Peace is Well Connected!	16
highway Specifications	17
Railroads	19
Commercial Airports	20
Ports	23
Port Shipping Distances	26
6. Industrial & Commercial Land Use.....	27
Industrial Parks	27
Local Permit Approvals - 2011	27
Acquisition of crown land	28
7. Utilities	29

Water System – Hudson’s Hope	29
Waste Water System – Hudson’s Hope	30
Landfill and Waste Management	30
Licensed Hazardous Materials Disposal	30
Electric Power	31
Natural Gas	32
Telecommunications	33
8. Business Support Services	34
9. Government	35
Municipal Government	35
Regional District	35
Provincial	35
Premier	35
Provincial Government Representation	36
Federal Government Representation	36
10. Housing.....	37
Housing Characteristics	37
Average Housing Values	37
Taxation	38
Corporate Income Tax	38
Personal Income Tax	38
Sales / Use Tax	38
Sales Tax Rate by Utility	39
Property Tax – Hudson’s Hope	40
11. International Resources	41
Investment and Business Support Offices	41
Financial Institutions	42
Air Transportation Service	43
12. Quality of Life.....	45
Climate	45
Culture	46
Health	48

1. DEMOGRAPHICS

POPULATION

HUDSON'S HOPE & AREA

Population By Age Group	Population (2006)	% Distribution
Under-18	400	25.5%
18-34	260	16.6%
35-54	425	27.1%
55-74	360	22.9%
75-Older	125	8.0%
Total:	1,570	100.0%
Median Age:	38.83	

NORTHERN BC

Population By Age Group	Population (2006)	% Distribution
0-4	19,300	6%
5-17	60,400	18.8%
18-24	30,900	9.6%
24-44	88,500	27.5%
45-64	90,700	28.2%
65+	32,200	10.0%
Total	322,000	100%

Data Source: BC Stats – Quarterly Regional Statistics “Cariboo, North Coast, North East, Nechako” – http://www.bcstats.gov.bc.ca/pubs/pr_qrs.asp

HOUSEHOLD INCOME

Household Income

2006

Number of Households

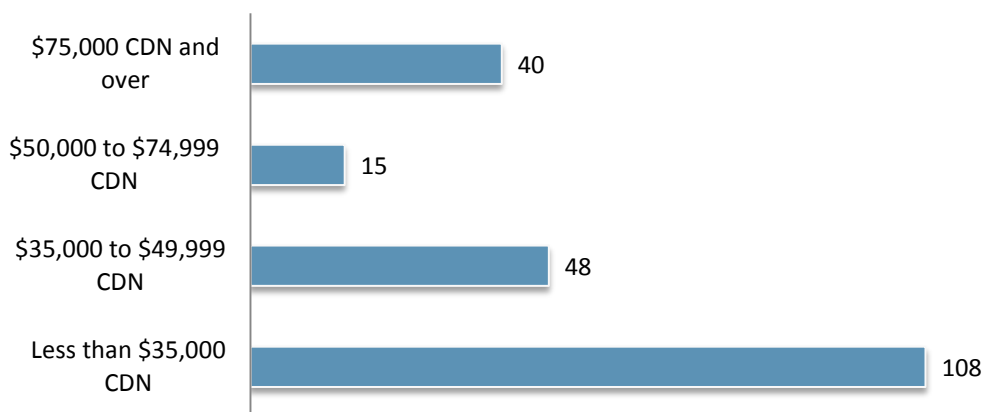
210

Median Income - All Families

\$54,009.00 (\$CDN)

Data Source: Census Community Profile – <http://www12.statcan.gc.ca/census-recensement/2006/dp-pd/prof/92-591/index.cfm?Lang=E>

HOUSEHOLD INCOME-DISTRIBUTION



Data Source: Invest BC Community Profile - “Demographics”

<http://investbc.gov.bc.ca/CommunityProfiles/Pages/CommunityInfo.aspx?page=demographic&pCommunityID=522>

WORKFORCE EDUCATION ATTAINMENT

Level of Education	# Attained	%
High School Diploma Only	200	22%
College/University Certificate/Diploma	140	16%
Less than High School Diploma	250	28%
Apprenticeship/Trades Certificate/Diploma	215	24%
University Bachelors Degree	75	8%
University Graduate Degree/Certificate	10	1%
University Medical/Dentistry/Optometry Degree	0	0%

Data Source: StatsCan – 2006 Census – “Education”

LANGUAGE KNOWLEDGE

Languages Spoken	Citizens
English	915
French	10
German	65
Norwegian	20
Cree	20
Spanish	10
Ukrainian	10
Gitksan	10

Data Source: StatsCan – 2006 Census – “Mother Tongue”



2. LABOUR FORCE

EMPLOYMENT BY INDUSTRY

HUDSON'S HOPE

Sector (Industry)	Number
Forestry & Logging	55
Mining and Oil & Gas	55
Construction	20
Manufacturing	20
Transportation, Warehousing & Public Utilities	170
Wholesale Trade	10
Retail Trade	20
Services	105
Finance, Insurance, Real Estate & Leasing	15
Government	100
Total	570

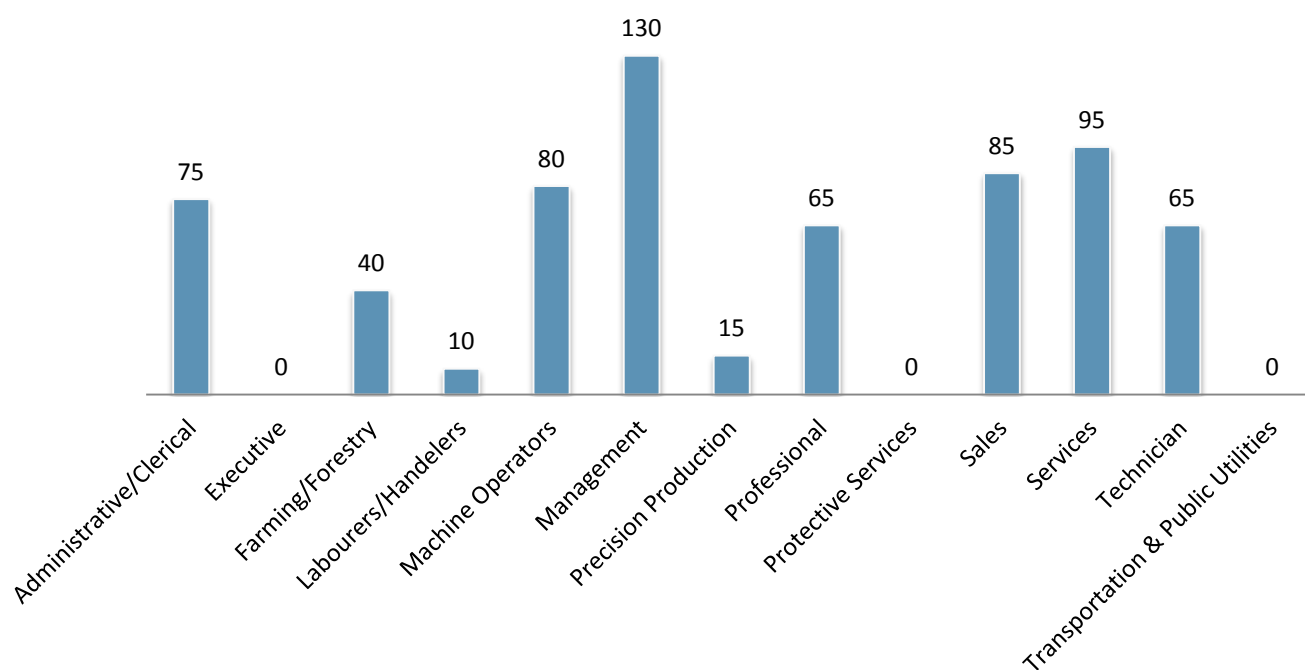
NORTHERN BC

Sector (Industry)	Number
Forestry & Logging	16,230
Mining and Oil & Gas	6,580
Construction	12,385
Manufacturing	21,310
Transportation, Warehousing & Public Utilities	12,305
Wholesale Trade	5,455
Retail Trade	18,475
Services	32,940
Finance, Insurance, Real Estate & Leasing	6,040
Government	43,120
Total	174,840

Data Source: Stats Canada 2006 Regional Distict Profile; Bulkley Nechako, Cariboo, Fraser Fort George, Central Coast, Skeena Queen Charlotte, Kitimat Stikine, Stikine, Northern Rockies, Peace River— <http://www12.statcan.ca/census-recensement/2006/dp-pd/prof/92-591/index.cfm?Lang=E>



EMPLOYMENT BY OCCUPATION



Data Source: StatsCan – 2006 Census – “Occupation”

TOP EMPLOYERS

Company	Product/Service	# of Employees	Website
BC Hydro	Electricity	102	www.bchydro.com
School District #60	Education	35	www.prn.bc.ca
District of Hudson’s Hope	Government	32	www.hudsonshope.ca
Northern Health	Healthcare	10	www.northernhealth.ca
Northern Lights College	Education		www.nlc.bc.ca
Peace Glen Hospital	Healthcare		
Shop Easy Foods	Retail	12	
Sportsman’s Inn	Hospitality	40	
Yellowhead Road & Bridge		7	www.yrb.ca
Durango Oilfield Services Ltd.	Oilfield Services	20	www.durango.ca
Best Western Hudson’s Hope Inn and Suites	Hospitality	15	www.bestwesternbc.com

Data Source: District of Hudson’s Hope- www.dist.hudsons-hope.bc.ca

AVERAGE INCOME BY OCCUPATION – NORTHERN BC

Occupation	Average wage (\$/Hour)(\$CDN)	Effective Date
Administrative Clerks	17.57	2007
Business Development Officers	20.09	2008
Carpenters	22.09	2007
Civil Engineers	34.19	2007
Commercial Drivers	25.15	2008
Computer Engineers	35.11	2006
Crane Operators	25.27	2007
Drafting Technicians	22.02	2008
Electrical Engineers	41.5	2006
Forestry Technicians	20.91	2007
Geological Engineers	49.04	2006
Heavy Equipment Operators	24.46	2007
Industrial & Manufacturing Engineers	34.62	2006
Industrial Electricians	29.27	2007
Labourers in Wood, Pulp and Paper Processing	20.59	2007
Labourers, Processing Manufacturing and Utilities	15.14	2007
Logging Machinery Operators	24.6	2007
Machinists	26.28	2007
Mechanical Engineers	36.39	2006
Mine Labourers	18.85	2007
Mining Engineers	50.14	2006
Primary Production Managers	45.32	2007
Purchasing Managers	38.7	2007
Sales Representatives	15.45	2007
Senior Managers	33.01	2007
Shippers and Receivers	15.04	2007
Steamfitters	26.7	2007
Trade Helpers and Labourers	18.84	2007
Truck Drivers	24.32	2007

For a complete list of Wages and Salaries in Northern BC visit the link below

http://www.labourmarketinformation.ca/standard.aspx?ppid=81&lcode=E&prov=59&gaid=25567&occ=&search_key=5&search_type=&employer_potential=&new_search=&total_records=522

LABOUR FORCE

	Number
Total Population 15 and over	890
In Labour Force	595
Employed	520
Unemployed	75

Data Source: StatsCan – 2006 Census – “Community Profile”

EMPLOYMENT RATE

	% of Population
Unemployment Rate	13.0%
Labour Participation	62.2%

Data Source: StatsCan – 2006 Census – “Community Profile”

LABOUR PARTICIPATION RATE

	Labour Participation Rate
Male	62.8%
Female	79.5%

Data Source: StatsCan – 2006 Census – “Community Profile”

COMMUTING

Place of Residence	Place of Work	# of People
Hudson’s Hope	Hudson’s Hope	305
Hudson’s Hope	Peace River B	20
Hudson’s Hope	Fort St. John	30
Hudson’s Hope	Chetwynd	60

Data source: Stats Canada - 2006 Census - “Commuting Flow” <http://www12.statcan.gc.ca/census-recensement/2006/dp-pd/tbt/Rp-eng.cfm?TABID=1&LANG=E&A=W&APATH=3&DETAIL=0&DIM=0&FL=A&FREE=0&GC=0&GID=5955025&GK=0&GRP=1&O=D&PID=90656&PRID=59&PTYPE=88971,97154&S=0&SHOWALL=0&SUB=0&Temporal=2006&THEME=76&VID=0&VNAMEE=&VNAMEF=>



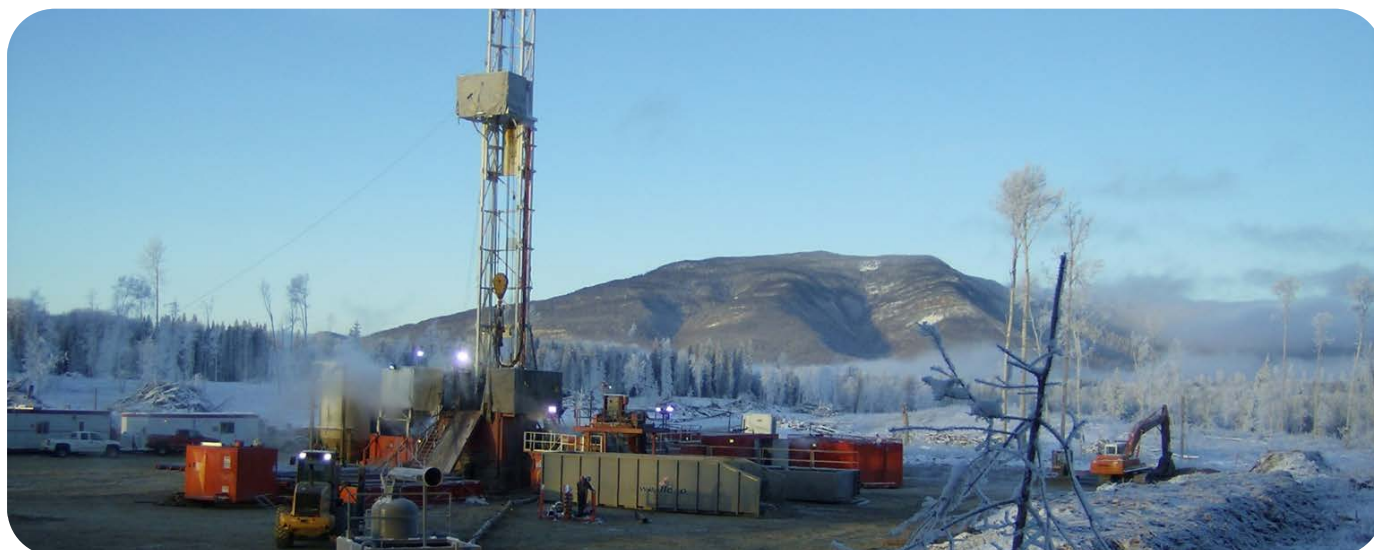
3. PAYROLL COSTS

WORKERS COMPENSATION – 2011

		Notes
Average Cost of All Manufacturing Per \$100 Payroll	\$1.54 CDN	Rates set by employer's business activity. Applies up to maximum gross earnings of \$71,700(CDN) per year.
Average Rate for Office Workers Per \$100 Payroll	\$0.20 CDN	There is no separate rating for office occupations in BC- the applicable industry rating applies to all workers. Rates for Business Services range from \$0.08-\$0.30 per \$100 of payroll. Average of \$0.30(CDN).
Maximum Weekly Benefit (Net)	\$950.42 CDN	Maximum per employee set at 90% of average net earnings (after deductions for income taxes, Canada Pension Plan & Employment Insurance), up to maximum wage of \$71,700 per year(CDN).

EMPLOYMENT INSURANCE – 2011

		Notes
Taxable Base		Based on gross payroll up to a gross per worker salary of \$44,200 per year(CDN).
Percentage Rate(Employer Premium)		
▪ Employee Rate	1.78%	Maximum annual contribution per worker is \$786.76(CDN).
▪ Employer Rate	2.492%	Maximum annual contribution per worker is \$1,101.46(CDN).
▪ Maximum Weekly Benefits	\$468.00 CDN	



SOCIAL INSURANCE (CANADA PENSION PLAN) – 2010

		Notes
Taxable Base	Gross Payroll \$3,500 CDN	Based on annual gross salary up to \$47,200, basic exemption of \$3,500. Both employers and employees are required to contribute to the Canada Pension Plan.
Employee/Employer Contribution	4.95%	Employer premium equal to employee premium
Maximum Annual Employer Contribution Per Employee	\$1910.70 CDN	Employer contribution matches employee contribution.
Rate	4.95%	
Maximum Annual Self Employed Contribution	\$3821.40 CDN	

Data Source: TaxTips.Ca – <http://www.taxtips.ca/cppandei.htm>

Data Source: WorkSafeBC – www.worksafebc.com



4. HIGHER EDUCATION

POST-SECONDARY INSTITUTIONS

Institution	University of Northern British Columbia
Campus/Address	UNBC Peace River-Liard Campus 9820 120 th Ave Box 1000, Fort St John, B.C. V1J 6K1 Tel: (250) 787-6220 Toll Free: 1-800-935-2270
Other Campuses	Prince George(Main Campus), Terrace, Prince Rupert, Quesnel,
Website	www.unbc.ca
Driving Distance from Community	Campus in Fort St. John (75 km)
Enrolment (2010/11):	
Total	3,622
Full-Time	3,138

Data Source: Northern Development Research

Institution	Northern Lights College
Campus/Address	Fort St. John Campus 9820 120 th Ave Box 1000, Fort St John, B.C. V1J 6K1 Tel: (250)785-6981 Toll Free: 1-866-463-6652
Other Campuses	Dawson Creek, Fort Nelson, Chetwynd, Tumbler Ridge
Website	www.nkc.bc.ca
Driving Distance from Community	Campus in Fort St. John (75 km)
Enrolment (2010/11):	2,438

Data Source: Northern Development Research

TRAINING SERVICES

Institution	Category	Address
Hudson's Hope Learning Centre- Northern Lights College	Continuing Education Workforce Training	10801 Dudley Drive Box 268, Hudson's Hope, B.C. V0C 1V0

Data Source: District of Hudson's Hope www.dist.hudsons-hope.bc.ca

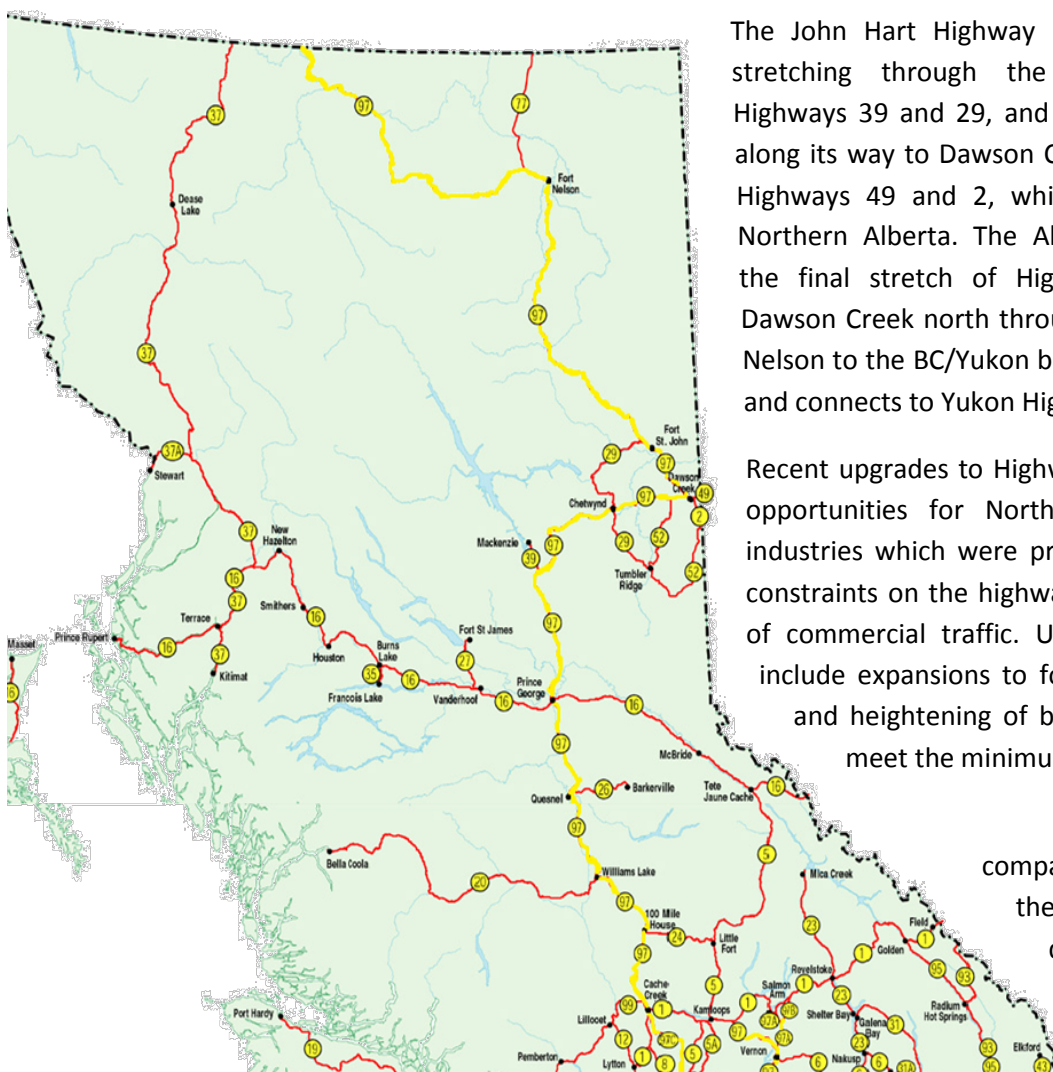
5. TRANSPORTATION

MAJOR TRANSPORTION ROUTES

HIGHWAY 97

BC Provincial Highway 97 provides a vital link between Quesnel and Prince George in the south and Chetwynd, Dawson Creek, Fort St. John and other communities and resource developments in the northeast of the province. Highway 97 is part of the provincial highway system that stretches from the Canada/US border to the BC/Yukon border, Highway 97 being the longest single numbered route in the province. It is a major north/south route linking several major BC communities to local, national and international markets.

Highway 97 is known by several names, each one designated to a particular stretch of the highway. The route takes its number from US Route 97, which it connects to at the US/Canada border. The Cariboo Highway is the section of 97 that stretches from Cache Creek to Prince George, where it connects to Highway 16 and feeds into the Northern Corridor.



The John Hart Highway begins in Prince George stretching through the Pine Pass, intersects Highways 39 and 29, and follows the Peace Rivers along its way to Dawson Creek. Here it connects to Highways 49 and 2, which make their way into Northern Alberta. The Alaska Highway comprises the final stretch of Highway 97, running from Dawson Creek north through Fort St John and Fort Nelson to the BC/Yukon border where it terminates and connects to Yukon Highway 1.

Recent upgrades to Highway 97 have created new opportunities for Northern BC businesses and industries which were previously hindered by the constraints on the highway that impeded the flow of commercial traffic. Upgrades to the Highway include expansions to four lanes in crucial areas and heightening of bridges and overpasses to meet the minimum standard of 5.0 meters.

This allows the companies that are operating in the Northeast with quick and direct access to the rest of the province and its business activities.

NORTHERN CORRIDOR

The Northern Corridor spans over half of continental Canada and reaches well into the heartland of North America south of Chicago, USA. It travels through the lowest elevations of the Americas great continental divide, also known as the “Yellow Head Pass,” and forms the straightest, shortest, flattest route for Asian- North American trade. Three Northern British Columbia ports provide efficient access to this corridor; Kitimat, Stewart and Prince Rupert. Each port offers unique advantages and services that meet the needs of the region and international trade.

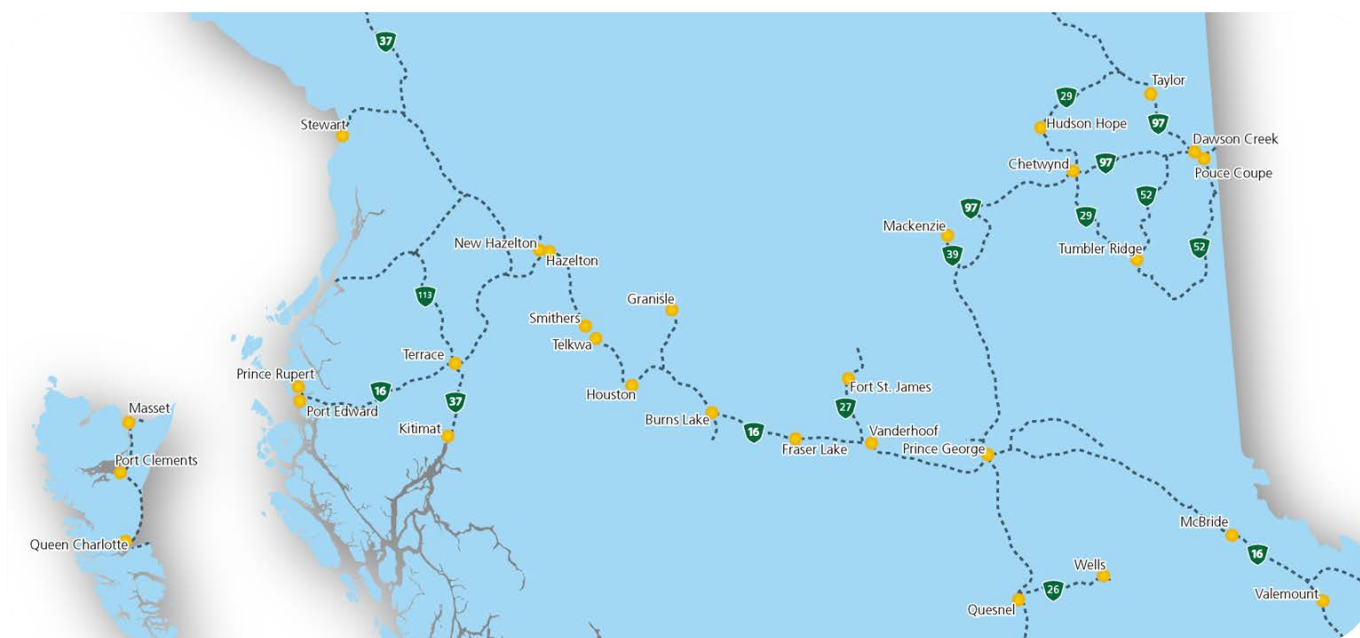
Trans-continental rail, Trans Canada Highway and direct air service into international Air Hubs are in place. The corridor services business covered by the North American Free Trade Agreement, through a variety of break bulk and container services in ports operated by governments and those run by private port interests.

The Northern Corridor is less impeded by road closures, significant weather patterns and avalanches than the Southern Canadian corridor. It provides “one less day” shipping advantage to or from Asia compared to all other North American Port locations including Vancouver and all USA pacific Ports.

Canadian National Rail (CN Rail) reaches well into the heartland of America with shipping agreements in place with major US rail carriers. CN has made significant investments in the Northern Corridor rail line including extended sidings, upgrades to signal systems, increased bridge and tunnel clearances. The corridor is serviced by five international airports and four northern airports with Prince George offering international services. The largest passenger service airport west of Prince George and north of British Columbia’s Okanagan region is the Terrace-Kitimat Northwest Regional airport. Overhead Clearances

THE NORTH PEACE IS WELL CONNECTED!

Highway 97 runs along the Peace River, connecting the North Peace region to Highway 16 and the Northern Corridor. There are also rail lines that run in three directions from the North Peace hub, Fort St John, keeping the area well connected to the rest of the country.



HIGHWAY 97- QUESNEL TO DAWSON CREEK

	Clearance (meters)
Quesnel to Prince George	
▪ Bellows CN Railway Overpass	4.96m
▪ Hixon CN Railway Overpass	4.90m
▪ Stoner CN Railway Overpass	4.70m
▪ Red Rock CN Railway Overpass	4.64m
Prince George to Mackenzie Junction	
▪ Salmon River Bridge	5.40m
▪ Parsnip River Bridge	5.05m
Mackenzie Junction to Chetwynd	
▪ Bijoux CN Railway Overpass	6.30m
▪ West Pine CN Railway Overpass	4.92m
Chetwynd to Dawson Creek	
▪ East Pine CN Railway Overpass	5.00m

YELLOWHEAD HIGHWAY 16 FROM BC BORDER TO PRINCE RUPERT

	Clearance (meters)
▪ Khyex River Bridge	5.95m
▪ Kitsequcla Overpass	5.7m
▪ Tete Jaune underpass	4.96m
Highway 37 from Hwy 16 North to Yukon Border	
▪ Irving River Bridge #2	5.74m
▪ Devil Creek Bridge	5.74m
Highway 37 from Hwy 16 South to Kitimat	
▪ Williams Creek Bridge	4.97m
▪ Hirsch Creek Bridge	4.72m
▪ Kitimat River Bridge	5.08m
Highway 37A from Hwy 37 To Stewart	
▪ No Clearances	

HIGHWAY SPECIFICATIONS

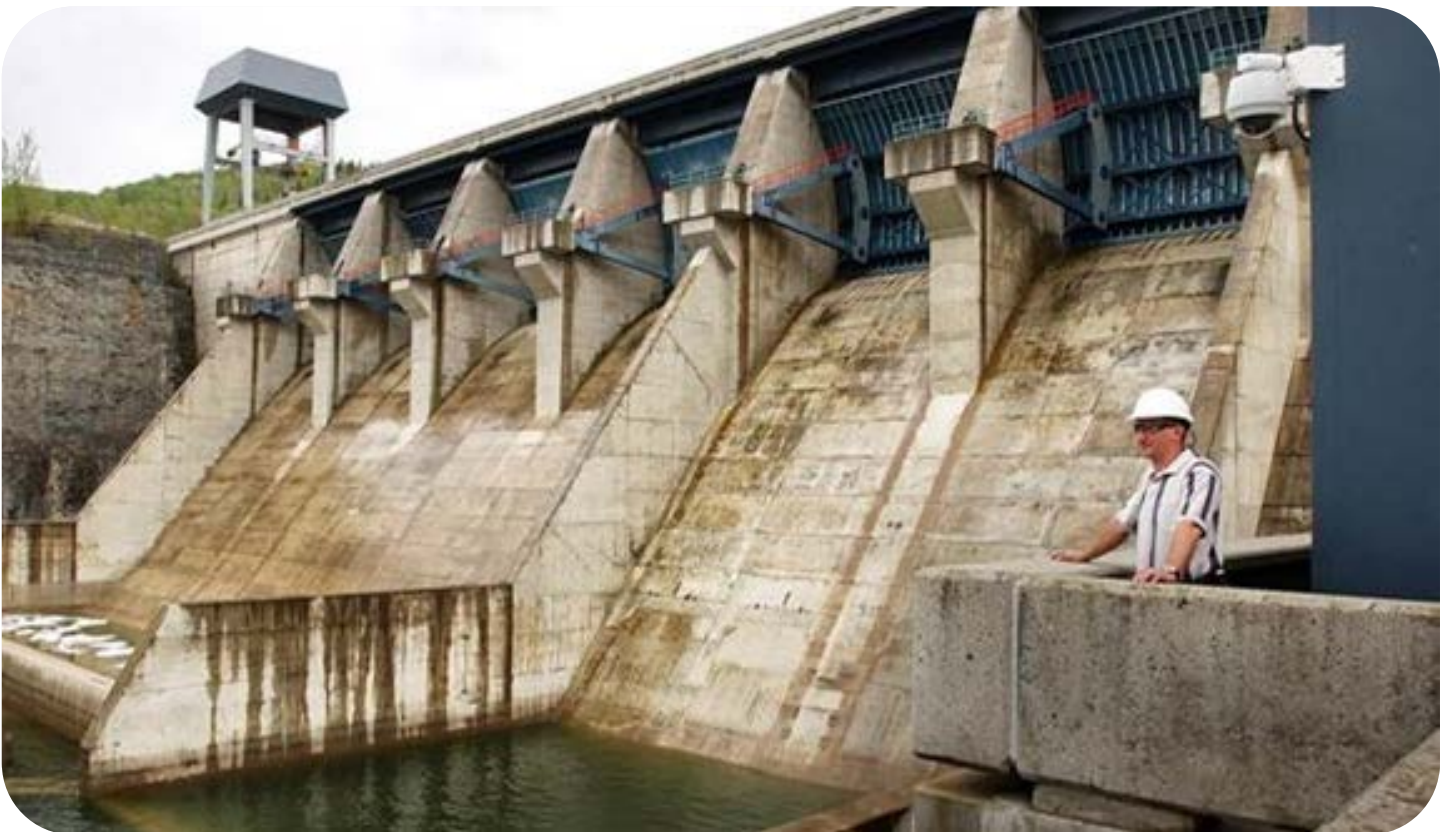
Commercial Vehicle Without Permit	Specifications
Maximum Width	2.59 meters
Maximum Height	4.15meters
Maximum Vehicle Weights	
Super B	63,500 kgs
Single Axel	9,100 kgs
Tandem Axle (Set)	17,000 kgs
Tridem Axle (Set)	24,000 kgs

Commercial Vehicle With Permit	Specifications
Maximum Width	4.4 meters
Maximum Height	4.72 meters
Maximum Vehicle Weights	
Super B	64,000 kgs
Single Axel	9,100 kgs
Tandem Axle (Set)	23,000 kgs
Tridem Axle (Set)	29,000 kgs

PROVINCIAL PERMIT CENTRE

For more information on receiving a commercial vehicle permit please contact **1-800-559-9688**. The core hours of service are from 5am to 10pm, seven days a week and most statutory holidays. The 1-800 number is available to callers anywhere in Canada or the United States. Permits available through this line include:

- non-resident commercial vehicle permits
- term oversize and overweight permits
- single trip oversize and overweight permits
- motor fuel tax permits
- highway crossing permits
- extra-provincial temporary operating permits



HIGHWAY DISTANCES

Metro Area	Distance (Km's)
Prince Rupert	1,084 km
Prince George	367 km
Kamloops	893 km
Edmonton	749 km
Vancouver	1,154 km
Calgary	1,044 km
Victoria	1,253 km
Seattle	1,267 km
Portland	1,545 km

RAILROADS

CN Rail	Chetwynd
Main or Branch Line:	Branch & Main
Shortline or National:	Shortline & National
Distance to Nearest Switching Yard:	65.4 km
Capability	Cargo- Bulk, Container, Liquid, Multi Commodity

VIA Rail	Prince George
Main or Branch Line:	Branch & Main
Shortline or National:	National & Shortline
Distance to Nearest Switching Yard:	369 km
Capabilities	Passenger

Data Source: Northern Development Research



COMMERCIAL AIRPORTS

Hudson's Hope Airport	
Hub Status	Commercial
Distance From Community	Located within Community
Hours of Operation	Dawn to Dusk
Approved Capital Expansion	No
Customs Point of Entry	No
Foreign Trade Zone	No
Full Instrumentation	no
No. of Runways	1
Runway Length	1,524 m
No. of Days Closed From Bad Weather in last 3 yrs	Under 10
NorthPeace Regional Airport (Fort St. John)	
Hub Status	Commercial
Distance From Community	174 km
Hours of Operation	7 am - 9 pm
Approved Capital Expansion	\$5.1 Million - project designed to replace existing terminal building with a new, terminal. \$6 million in runway construction
Customs Point of Entry	No
Foreign Trade Zone	No
Full Instrumentation	No
No. of Runways	2
Runway Length	2,057 m, 2,118 m
Carriers	Air Canada Jazz, Peace Air, Hawkair, Central Mountain Air, Air Canada, Capital City Air, North Cariboo Air
No. of Days Closed From Bad Weather in last 3 yrs	
Weekly Non-Stop Flights	56
Flights to Largest Cities Served	
▪ Greater Vancouver	21

Data Source: Northern Development Research

Dawson Creek Airport	
Hub Status	Commercial
Distance From Community	109 km
Hours of Operation	24 hrs / 7 days
Approved Capital Expansion	\$7 million spent on recent airport improvement
Customs Point of Entry	No
Foreign Trade Zone	No
Full Instrumentation	Yes
No. of Runways	1
Runway Length	1,550 m
Carriers	Central Mountain Air, Hawkair
No. of Days Closed From Bad Weather in last 3 yrs	2
Weekly Non-Stop Flights	21

Vancouver International Airport	
Hub Status	International
Distance From Community	1,086 km
Hours of Operation	24 Hours/7 Days
Approved Capital Expansion	Yes
Customs Point of Entry	No
Foreign Trade Zone	No
Full Instrumentation	No
No. of Runways	3
Runway Length	3,018 m, 3,597 m, 2,225 m
No. of Days Closed From Bad Weather in last 3 yrs	0
Weekly Non-Stop Flights	63
Flights to Largest Cities Served:	
New York	21
Tokyo	21
Seoul	14
Mexico City	7

Data Source: Northern Development Research

Prince George Airport	
Hub Status	Commercial
Distance From Community	304Km
Hours of Operation	24hr/7 days
Approved Capital Expansion	\$2,000,000 capital expansion
Customs Point of Entry	Yes
Foreign Trade Zone	No
Full Instrumentation	Yes
No. of Runways	3
Runway Length	2,255m, 1,714m, 1,352m
Carriers	Air Canada Jazz , Central Mountain Air, West Jet, Purolator, DHL, Northern Thunderbird
No. of Days Closed From Bad Weather in last 3 yrs	1 week of fog activity
Weekly Non-Stop Flights	161 nonstop flights



PORTS

PORT OF PRINCE RUPERT

Port of Prince Rupert

Distance from Prince Rupert Located adjacent to the community

Location of Port Prince Rupert

Terminals Fairview (Container) Terminal, Ridley Terminals, (coal, wood pellets), Prince Rupert Grain, Northland Cruise Terminal

Type of Port Ocean

Channel Depth 35-55 meters

Shallow Water Barging Facilities Yes

Deep Water Barging Facilities Yes

General Cargo Facilities Yes

Containerized Facilities Yes

Refrigerated Container Facilities Yes

Cruise Ship Facilities Yes

Storage Facilities Yes

Highway Serving Port #16

Railway Serving Port CN Rail

Types of Services: Bulk/break-bulk: Coal, Petroleum Coke, Wood Pellets, Grain, Logs,

Imports Retail (including electronics, apparel, furniture, auto parts); petroleum products; industrial inputs (tiles, glass)

Exports Midwest – specialty crops; scrap metal, recycled paper
British Columbia – Forest products (lumber, pulp, logs); aluminum, seafood

Shipping Lines Cosco, Hanjin, Yang Ming, K-Line, Quickload Transloading Services, Shipping Agents, GW Nickerson Co., Northcoast Shipping, Rupert Marine Shipping, Tidal Transport & Trading Ltd.



PORT OF KITIMAT

Private Port of Kitimat

Location of Port	Kitimat
Terminals	Rio Tinto Alcan - Break Bulk Terminal Methanex Petrochemical Terminal Eurocan Breakbulk Terminal
Type of Port	Deep Sea
Channel Depth	45- 200 fathoms,18-185 Meters (59-607 Feet)
Turning Basin	1.1 - 2.2 nautical miles
Shallow Water Barging Facilities	Yes
Deep Water Barging Facilities	Yes
General Cargo Facilities	Yes
Containerized Facilities	No
Storage Facilities	Yes
Highway Serving Port	Highway # 16 via #37
Railway Serving Port	CN Rail
Types of Services	Bulk/ Break-bulk, Methanol, Amonia condensate, Pitch, Alumina ,Bauxite condensate
Imports	Pitch, Alumina, Bauxite Condensate, Methanol
Exports	Kraft Paper, Aluminum Sheeting
Shipping Lines	Waterfront Shipping, Gearbulk
Shipping Agents	GW Nickerson Co., TNC Canada
Customs Brokers	GW Nickerson Co., Moore E T S Services
Tug & Barge	SMIT Marine, Seaspace International



CUSTOM POINT OF ENTRY

Canadian Border Services Agency	Dawson Creek
Type of Entry Point	Airport
Location	P.O. Bok 150 Dawson Creek, BC Canada V1G 4G4 Phone (250) 782-3142

Canadian Border Services Agency	Kitimat
Type of Entry Point	Port
Location	309-450 City Centre Kitimat, BC, Canada V8C 1T6 Phone (250) 627-3003

Data Source: City of Dawson Creek – www.dawsoncreek.ca
Data Source: City of Kitimat – www.kitimat.ca
Data Source: Invest BC Community Profile – “Transportation”



PORT SHIPPING DISTANCES

The NW Transportation and Trade Corridor ports (Kitimat and Prince Rupert, Stewart) are between 1 and 1 1/2 day closer to general Asia Pacific markets than the Ports in British Columbia's lower mainland; and the Vancouver Ports. The Southern Ports are closer to the Panama Canal and subsequently, the Atlantic. The following table is in nautical miles. The Time/Speed/Distance Calculations are at 16.1439 Kn/Hr., the average speed The Port of Vancouver uses for calculating their shipping to Yokohama, Hong Kong, Kaohsiung (Taiwan) and Xingang (China). Deep-sea vessels travel at various speeds between 14Kn/Hr and 20Kn/Hr. The 'great circle shipping route' to Asia from North America has well documented ocean currents and weather/wind patterns which allows for accurate estimates.

	Kitimat	Prince Rupert	Stewart	Vancouver	Los Angeles	Yokohama (Japan)	Hong Kong	Kaohsiung Kang(Taiwan)	Xingang (China)
Kitimat	--	121 NM 7.5 Hrs	264 NM 17 Hrs	400 NM 1 Day	1,391 NM 3.5 Days	3,941 NM 10 Days	5,444 NM 14 Days	6,,187 NM 16 Days	6,187 NM 16 Days
Prince Rupert	121 NM 7.5 Hrs	--	123 NM 10 Hrs	477 NM 1.2 Days	1,432NM 3.6 Days	3,810 NM 9.8 Days	5,323 NM 13.7 Days	6,110 NM 15.7 Days	6,110NM 15.7 Days
Stewart	264 NM 17 Hrs	123 NM 10 Hrs	--	573 NM 1.5 Days	1,529 NM 4 Days	3,896 NM 10.3 Days	5,406 NM 14.1 Days	5,155 NM 13.4 Days	4,749 NM 12.5 Days
Vancouver	400 NM 10 Day	477 NM 1.2 Days	573 NM 1.5 Days	--	991 NM 2.5 Days	4,262 NM 11 Days	5,763 NM 15 Days	6,587 NM 17 Days	7,578 NM 20 Days
Los Angeles	1,391 NM 3.5 Days	1,432 NM 3.6 Days	1,529 NM 4 Days	991 NM 2.5 Days	--	4,839 NM 12.5 Days	6,380 NM 18 Days	7,578 NM 20 Days	8,959 NM 23 Days
Yokohama	3,941 NM 10 Days	3,810 NM 9.8 Days	3,896 NM 10.3 Days	4,262 NM 11 Days	4,839 NM 12.5 Days	--	1,585 NM 4 Days	1,335 NM 3.4 Days	1,335 NM 3.4 Days
Hong Kong	5,444 NM 14 Days	5,323 NM 13.7 Days	5,406 NM 14.1 Days	5,763 NM 15 Days	6,380 NM 18 Days	1,585 NM 4 Days	--	290 NM 18 Hrs	290 NM 18 Hrs
Kaohsiung Kang	6,187 NM 16 Days	6,587 NM 17 Days	5,155 NM 13.4 Days	6,587 NM 17 Days	7,578 NM 20 Days	1,335 NM 3.4 Days	290 NM 18 Hrs	--	227 NM 14 Hrs
Xingang	6,187 NM 16 Days	6,587 NM 17 Days	4,749 NM 12.5 Days	7,578 NM 20 Days	8,959 NM 23 Days	1,335 NM 3.4 Days	290 NM 18 Hrs	227 NM 14 Hrs	--

Source: United States Government. "Distances Between Ports" Prepared and published by the National Imagery and Mapping Agency, Bethesda, Maryland. Ninth Edition 1997. *Time/Speed/Distance Calculations at 16.1439 Kn/Hr., the average speed Vancouver Port lists to reach Yokohama, Hong Kong, Kaohsiung (Taiwan) and Xingang (China)

6. INDUSTRIAL & COMMERCIAL LAND USE

INDUSTRIAL PARKS

Industrial Parks	Number
Number of Industrial Parks	1
Total Acres	92
Number of Acres in Use	87
Number of Acres Vacant	5
Number of Acres Fully Serviced	80
Number of Vacant Acres Partially Serviced	7
Number of Acres Not Serviced	5

Data Source: District of Hudson's Hope – www.dist.hudsons-hope.bc.ca

LOCAL PERMIT APPROVALS - 2011

Type of Permit	Average Time for Approval	Associate Fees
Building Permit	3 days	Varies
Business License	1 day	\$35
Development Permit	4 weeks	\$250
Occupancy Permit	1 day	Included in Building Permit
Plan Amendment	4 weeks	\$500 + Advertising
Re-Zoning Application	4 weeks	\$500 + Advertising
Subdivision Application	3 days	Varies

Data Source: District of Hudson's Hope – www.dist.hudsons-hope.bc.ca

ACQUISITION OF CROWN LAND

- Crown land is land that is owned by the Province of British Columbia. The Province is the steward of the land and can lease, license and sell Crown land for a variety of purposes including residential, commercial, industrial, agricultural, tourism and recreational purposes.

Company	Contact	Notes
Integrated Land Management Bureau	FrontCounterBC@gov.bc.ca	Develops Crown land parcels with values up to \$2.5 million
Ministry of Tourism, Culture and the Arts	Telephone: 250 371-3952	Handles land sales related to resort development, under the All Seasons Resort Policy.
Ministry of Transportation	Telephone: 250 387-3198	Handles land sales related to public airports and port authorities and the marketing of Crown land is done through MLS Realtors

To view properties that the Federal Government of Canada has for sale, please visit: <http://reo.pwgsc.gc.ca/public/>



7. UTILITIES

WATER SYSTEM – HUDSON’S HOPE

Currently, the District of Hudson’s Hope uses river, spring and well water. Well water use for the District is restricted to a residential water stand serving the area in and around Beryl Prairie. In the main part of town, spring and river water is mixed to about 50/50 and pumped directly into the distribution system with chlorine gas to provide disinfection. At the top of the system there are two reservoirs with a total storage of 600,000 gallons. There is also a booster station to provide pressure and fire flows to two subdivisions on the “upper bench” of the distribution system. As well as supplying water to residential and commercial properties in the system, the District maintains a second residential water stand and a commercial water stand for larger commercial vehicles. A major upgrade is in the works which will provide multi-media filters, UV disinfection and sodium hypochlorite injection to replace the gas disinfection for safety concerns. The upgrades are expected to be online no later than March 31, 2012.

The District of Hudson’s Hope Public Works Department is responsible for the operation and maintenance of the water supply system. For more information, contact the District at (250) 783-9901.

Data Source: District of Hudson’s Hope – www.dist.hudsons-hope.bc.ca

WATER PRODUCTION

Name of Provider	District of Hudson’s Hope
Rated Capacity	800,000 imp. Gallons/day
Average Daily Demand	148,000 imp. gallons
Peak Demand	480,000 imp. gallons
Residential Cost (flat rate)	\$228.15 annually
Industrial Cost / 1,000 Gallons	Non-metered: \$480.00 annually; Metered: 72 cents per 1000 L
Water Connection Fee: Industrial	N/A

Data Source: District of Hudson’s Hope – www.dist.hudsons-hope.bc.ca

WASTE WATER SYSTEM – HUDSON’S HOPE

The District of Hudson’s Hope has a waste water treatment plant that consists of two aerated lagoon cells that discharge on site into the ground. The lagoons are fed by a pressure line from the main lift station, which in turn is fed from a gravity collection system as well as two other smaller lift stations. The original lagoons and the core of the collection system were installed in the early 1960’s. The collection system has seen some expansion over the years, but the lagoons have seen little in the way of upgrades except for the installation of aerators in 2009. In 2012, the District will be working on a liquid waste management plan that will be looking at substantial upgrades, which will be introduced in stages over the next 20 to 30 years.

The District of Hudson’s Hope Public Works Department is responsible for the operation and maintenance of the waste water system. For more information, contact the District at (250) 783-9901.

Data Source: District of Hudson’s Hope – www.dist.hudsons-hope.bc.ca

SEWAGE SERVICE

Name of Provider	District of Hudson’s Hope
Rated Capacity	400,000 imp. Gallons per day
Average Daily Demand	95,500 imp. gallons
Peak Demand	180,000 imp. gallons
Cost per 1000 Gallons - Industrial	Non-metered: \$228.00 annually; Metered: 45% of water monthly
Sewer Connection Fee for Industrial Users	N/A

Data Source: District of Hudson’s Hope – www.dist.hudsons-hope.bc.ca

LANDFILL AND WASTE MANAGEMENT

Name of Landfill	Peace Rivers Regional District Landfill – uses a transfer station at Hudson’s Hope
Location	Transfer Station in Hudson's Hope
Capacity Left at Current Site	2 years
Plans for New Capacity	

Data Source: District of Hudson’s Hope – www.dist.hudsons-hope.bc.ca

LICENSED HAZARDOUS MATERIALS DISPOSAL

Name of Site	CCS- Land Farm
No. of Licensed Hazardous Waste Haulers Serving the Area	1

Data Source: District of Hudson’s Hope – www.dist.hudsons-hope.bc.ca

ELECTRIC POWER

Provider: BC Hydro	www.bchydro.com
Enquiries to hook up new property	1 (877) 520-1355
Enquiries about existing properties already hooked up	1 (800) 224-9376
Net Importer/Exporter of Power:	Net Exporter – BC Hydro generates between 43,000 and 54,000 GWH of electricity annually.
% of Reserve Margin Including Generation & Net Purchases	8% as per WSCC guidelines plus an additional 8% surplus
Average Electrical Service Availability Index	
▪ Most Recent Year	99.940
▪ Last 5 Years	99.9314
Name of Power Pool Membership	Formal membership in WSCC, WSPP, Power Pool of Alberta (PPA), MAPP. Also active in SPP and CalPX
Source Electric Power Deregulated	Wholesale competition allowed
Residential Customers	6.27 cents per kWh for the first 1,350 kWh they use over a two-month billing period. Above that amount, customers pay 8.78 cents per kWh for the balance of the electricity used during the billing period.
Business Customers	Average Cost Per kWh
General Service under 35kW for 2 Months	<i>Small business such as stores, small warehouses, offices and auto repair shops</i>
▪ Basic Charge	18.53 cents per day
▪ All kWh	\$0.0881 kWh
▪ Minimum Charge	The Basic Charge
▪ Rate Rider	2.5% Rate Rider applied to all charges, before taxes and levies.
General Service 35 kW and over for 1 month	<i>Retail stores, medium industry, manufacturing, schools, office buildings, supermarkets</i>
▪ Basic Charge	18.53 cents per day
▪ Demand Charge	First 35 kW for NIL Next 115 kW at \$4.51 per kW All additional kW at \$8.66 per kW
▪ Energy Charge	First 14,800 kWh \$0.0872 per kWh All additional kWh \$0.0444 per kWh
▪ Discounts	1.5% on entire bill if customer's electricity is metered at primary potential. \$0.25 per kW if customer supplies transformation from a primary to a secondary potential. If a customer is entitled to both discounts the 1.5% discount is applied first.
▪ Minimum Charge	50% of the highest maximum demand charge billed in any month within an on-peak period (1 November to 31 March inclusive) during the preceding 11 months.

▪ Rate Rider	2.5% Rate Rider applied to all charges, before taxes and levies.
---------------------	--

Industrial: Transmission Service

Mines, chemical plants, large sawmills, pulp and paper mills, large manufacturing

▪ Demand Charge	\$6.027 per kVA of billing demand
▪ Energy Charge	\$0.03108 per kWh applied to all kWh up to and including 90% of the customers baseline load (CBL) in each billing year. \$0.07360 per kWh applied to all kWh above 90% of the CBL in each billing year.
▪ Minimum Charge	\$5.581 per KVa of billing demand per billing period
▪ Rate Rider	2.5% Rate Rider applied to all charges, before taxes and levies.

Data Source: BC Hydro "Rates" – www.bchydro.com

NATURAL GAS

Fortis BC	www.fortisbc.com
Rate Territory	Inland
Firm Contract Rates (2011)	
Type of Customer	Small Industrial (Rate 3)
Basic & Administration Charge (Monthly)	\$132.52 (CDN)
Delivery & Commodity Demand Charge (per GJ)	\$7.83 (CDN)

Data Source: Fortis BC "Rates" – www.fortisbc.com



TELECOMMUNICATIONS

Telus is the primary service provider in Hudson's Hope. Additional telecommunications service providers are Shaw, Bell, and Rogers.

Name of Provider	Telus
Address	#5-3777 Kingsway Burnaby, BC V5H 3Z7
Website	www.telus.com
Contact#	
▪ Residential	250 310 2255
▪ Business	250 310 3100

Service Characteristics of The Office:

▪ Switch Technology	Digital
▪ Fiber Service provided	Yes
▪ 100 Mbps LAN Service Available	Yes
▪ Monitoring- Remotely or On-Site	Yes via Peace Region Internet Society's wireless towers
▪ ISDN Available	No
▪ ADSL Available	No
▪ ADSL Available From Switch	No
▪ Central Office on Self-Healing Fiber Ring	Yes
▪ Dual Feed from Two Separate Switching Offices	Yes
▪ Multiple Route Diversity	Yes

Data Source: Northern Development Research



8. BUSINESS SUPPORT SERVICES

Business Support Services	Number
Machine Shop (Tool & Die)	2
Welding	2 plus other independent contract operators
Office Equipment Service & Repair	0
Temporary Employment Services	0

International Support Services	Number
Import/Export Brokers	0
International Courier Services	0
Freight Forwarders	1 from Dawson Creek
Business Development Offices	5 Business Development Bank, Chamber of Commer, Sci-Tech North, BNorth Peace Economic Development Commission and Aboriginal development Centre

Data Source: District of Hudson’s Hope – www.dist.hudsons-hope.bc.ca

Note: Many services can be found in nearby communities



9. GOVERNMENT

MUNICIPAL GOVERNMENT

District Name	Hudson's Hope
Form (Structure)	Mayor and Council
Number of Elected Officials	7
Mayor	Karen M. Anderson
Chief Administrative Officer	N/A

REGIONAL DISTRICT

Regional District Name	Peace River
Form (Structure)	Chair and Board
Number of Elected Officials	12
Chair	Karen Goodings

PROVINCIAL

Government of British Columbia	
Form (Structure)	British Parliamentary
Number of Elected Officials	85
How Often Does Legislature Convene	2011-May 16-19, 24-26, 30,31, June 1,2

PREMIER

Name	Christy Clark
Affiliation	British Columbia Liberal Party
Year Elected	May 2011
Current Term Expiration	2 Years
Allowed to Run for Another Term	Yes
Next Election Date	Tuesday, May 14, 2013

PROVINCIAL GOVERNMENT REPRESENTATION

Name of Member of Legislative Assembly (MLA)	Pat Pimm
Total Members of Legislative Assembly	85
Electoral District	Peace River North
Party Affiliation	British Columbia Liberal Party

FEDERAL GOVERNMENT REPRESENTATION

Name of Member of Parliament (MP)	Bob Zimmer
Electoral District	Prince George- Peace River
Year Elected	2011
Party Affiliation	Conservative Party of Canada

SENATORS

No. of Appointed Officials	In Canada there are ordinarily 105 Senators appointed by the Governor General on the advice of the Prime Minister.
-----------------------------------	--



10. HOUSING

HOUSING CHARACTERISTICS

Dwelling Type	#	% of Total Dwelling
Single-detached houses	460	100 %
Semi-detached houses	0	0 %
Apartments, duplex	0	0 %
Other dwellings	0	0 %
Number of owned dwellings	440	96 %
Number of rented dwellings	20	4 %
Number of dwellings constructed before 1986	280	61 %
Number of dwellings constructed between 1986 and 2006	180	39 %
Total # of Private Dwellings	460	100 %

Data Source: StatsCan – 2006 Census – “Community Profile”

AVERAGE HOUSING VALUES

Municipality	Single Family Homes	Multi-Family Homes	Total Property Tax & Charges
District of New Hazelton	\$132,089 CDN	-	\$2,171 CDN

Data Source: District of Hudson’s Hope – www.dist.hudsons-hope.bc.ca



TAXATION

CORPORATE INCOME TAX

	Small Business	Manufacturing	Non-Manufacturing
Federal			
▪ Rate	11%	16.5%	16.5%
▪ Formula (Sales, Property & Payroll)	n/a	n/a	n/a
▪ Accelerated Depreciated Permitted	Yes	Yes	Yes
Provincial			
▪ Rate	2.5%	10.0%	10.0%
▪ Formula (Sales, Property & Payroll)	Sales & Payroll	Sales & Payroll	Sales & Payroll
▪ Accelerated Depreciated Permitted	No	No	No
Local			
<i>British Columbia has no local taxes</i>			
Total Federal and Provincial Corporate Income Tax	13.5%	26.5%	26.5%

PERSONAL INCOME TAX

	Federal	State/Provincial	Local
Earned Income	15 – 29%	5.06 – 14.7%	0%
Unearned Income (e.g. Dividends)	0 – 14.55%	0 – 3.92%	0%
Capital Gains	7.5 – 14.5 %	2.08 – 7.35%	0%

SALES / USE TAX

	Rate	Notes
Harmonized Sales Tax	12%	HST on business inputs is fully recoverable
Local	0%	BC has no local sales tax
Total (Effective Combined Rate) Business	7%	Net of GST 0% for production machinery and equipment for eligible manufacturers

SALES TAX RATE BY UTILITY

	Yes/No	Rate	Notes
Electric Power	Yes	12%	HST is fully recoverable
Natural Gas	Yes	12%	HST is fully recoverable
Fuel Oil	Yes	12%	HST is fully recoverable
Water	No	0%	-
Sewer	No	0%	-
Hazardous Waste Disposal	Yes	12%	HST is fully recoverable

TELEPHONE SUBJECT TO SALES/USE TAX

	Yes/No	Rate	Notes
Local	Yes	12%	HST is fully recoverable
Long Distance	Yes	12%	HST is fully recoverable

MACHINERY AND EQUIPMENT SUBJECT TO SALES/USE TAX

	Yes/No	Rate	Notes
Production	No	0%	-
Non-Production	Yes	12%	HST is fully recoverable
Pollution Control	Yes	12%	HST is fully recoverable
Office Equipment & Fixtures	Yes	12%	HST is fully recoverable

SALES/USE TAX ON TANGIBLE PROPERTY

	Yes/No	Rate	Notes
Office Building Construction Materials	Yes	12%	HST is fully recoverable
Industrial Building Construction Materials	Yes	12%	HST is fully recoverable
Manufactures Raw Materials	No	0%	-
Standard Software	Yes	12%	HST is fully recoverable
Custom Software	Yes	12%	HST is fully recoverable

SALES/USE TAX ON INTANGIBLE PROPERTY

	Yes/No	Rate	Notes
Accounts Receivable	No	0%	-
Capital Stock	No	0%	-
Stock/Bond Transaction Fee	No	0%	-

PROPERTY TAX – HUDSON’S HOPE

Levy	Residential	Utility	Major Industry	Light Industry	Business	Non-Profit	Farm
General Municipal	3	24	16	16	11	3	3
School	2.6686	14.1	6.6	6.6	6.6	3.4	6.8
Regional District	0.4359	1.5255	1.482	1.482	1.0679	0.4359	0.4359
Improvements Only	0.0459	0.1605	0.1559	0.1559	0.1123	0.0459	0.0459
Regional District Hospital	0.601	2.1035	2.0434	2.0434	1.4724	0.601	0.601
BCAA	0.0621	0.5114	0.5114	0.1896	0.1896	0.0621	0.0621
MFA	0.0002	0.0007	0.0007	0.0007	0.0005	0.0002	0.0002
TOTAL	7.1072	43.429	27.7914	27.4696	21.1618	7.8386	11.2386

Data Source: District of Hudson's Hope – www.dist.hudsons-hope.bc.ca

Property Tax rates effective 2011, Property Tax rates per **\$1000 Assessed** Personal Property (M&E, Inventory, Other)

Municipal Note: BC does not have Personal Property Taxes.



11. INTERNATIONAL RESOURCES

INVESTMENT AND BUSINESS SUPPORT OFFICES

Fort St John and District Chamber of Commerce

Contact Name	Annette Oak
Address	9325 100 Street Fort St. John, BC V1J 4N4
Phone Number	(250)785-6037
E-Mail	info@fsjchamber.com

Northern Development Initiative Trust

Contact Name	Dean McKinley, Economic Development Manager - Northwest
Address	301 – 1268 Fifth Avenue, Prince George BC V2L 3L2
Phone Number	(250) 561-2525
E-Mail	dean@northerndevelopment.bc.ca

Community Futures Development Corporation – Peace River-Liard

Address	904 – 102 Avenue, Dawson Creek, BC, V1G 2B7
Phone Number	(250) 782-8748
Webpage	www.communityfutures.ca

BC Rural Secretariat – Ministry of Community Development

Contact Name	Tamara Danshin, Regional Manager
Address	1201-103 Avenue
Phone Number	(250) 784-2211
E-Mail	tamara.danshin@gov.bc.ca

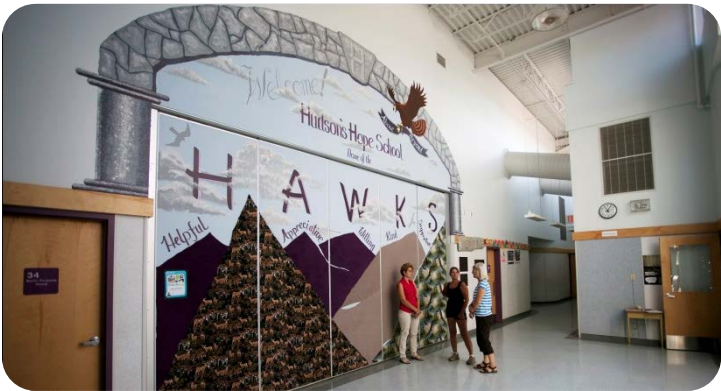
Invest BC

Contact Name	Michael Track, A/Executive Director – Investor Services
Address	999 Canada Place, Suite 730, Vancouver BC V6C 3E1
Phone Number	(604) 775-2202
E-Mail	michael.track@gov.bc.ca

FINANCIAL INSTITUTIONS

Name of Company	Address	Phone #	Website
North Peace Savings and Credit Union	10050 Beattie Hudson’s Hope, BC V0C 1V0	(250)783-5217	www.npscu.ca

Data Source: District of Hudson’s Hope – www.dist.hudsons-hope.bc.ca



AIR TRANSPORTATION SERVICE

Largest International Airport	Vancouver	
Distance to Airport	1,150 km	
Customs Point of Entry	Yes	
Foreign Trade Zone	No	
Full Instrumentation	Yes	
No. of Runways	3	
Runway Length	3,030 m, 3,350 m, 2,750m	
Carriers		
▪ Passenger	51	
▪ Cargo	18	
▪ Charter	7	
Weekly Non-Stop Flights	63	
Air Service to Northwest Regional Airport	Flight Frequency	Flight Duration
Air Canada www.aircanada.com	3/day, Sunday-Friday 2/day, Saturday	1:20 hr
Hawkair www.hawkair.ca	4/day, Sunday-Friday 2/day, Saturday	2 Hrs



Largest International Airport	Prince George	
Distance to Airport	355 km	
Customs Point of Entry	Yes	
Foreign Trade Zone	No	
Full Instrumentation	Yes	
No. of Runways	3	
Runway Length	2,255 m, 1,714 m, 1,352 m	
Carriers		
▪ Passenger	Air Canada Jazz, Central Mountain Air, WestJet	
▪ Cargo	Air Canada, WestJet, Puralator, DHL	
▪ Charter	Northern Thunderbird Air, Berry Air	
Weekly Non-Stop Flights	161	
Air Service to Northwest Regional Airport	Flight Frequency	Flight Duration
Central Mountain Air www.flycma.com	5/week; Mon, Tue, Thu, Fri, Sat Sun	1:10 hr



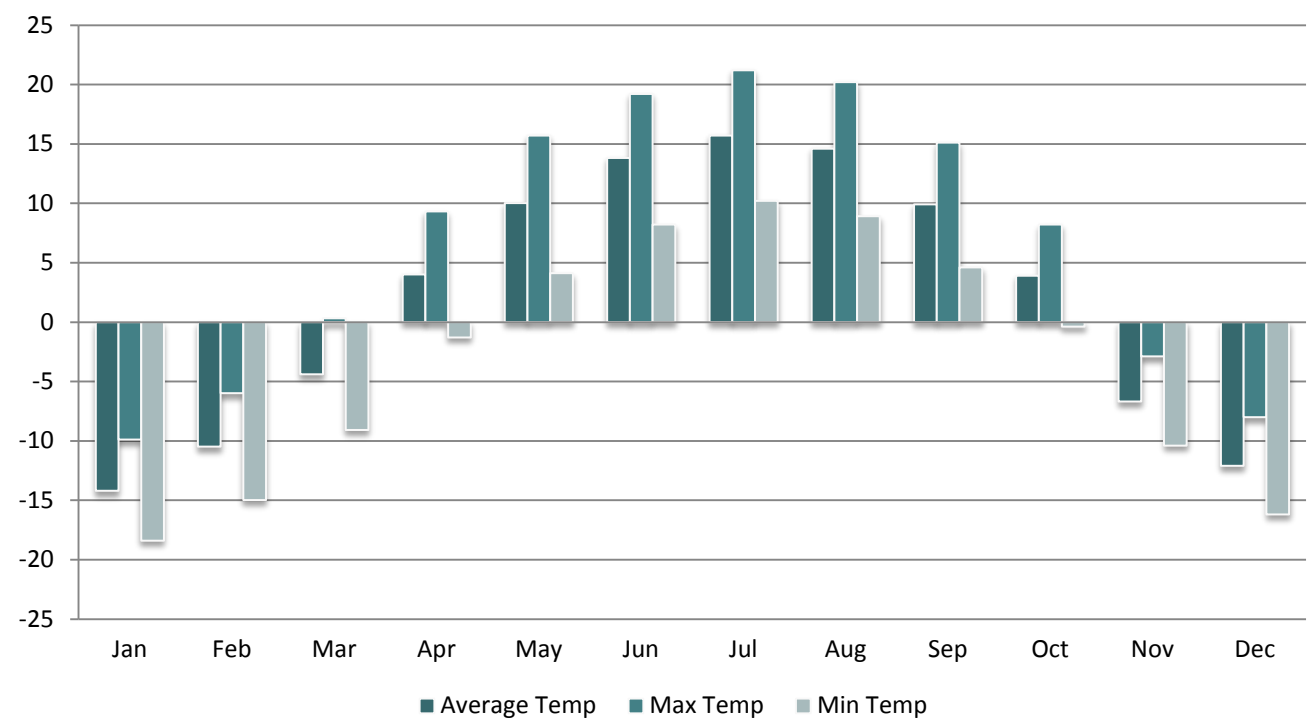
12. QUALITY OF LIFE

CLIMATE

Location: Hudson’s Hope, BC Canada
Latitude: 56.03232’ N
Longitude: -121.9049’ W



AVERAGE TEMPERATURE IN DEGREES CELSIUS BY MONTH – 2010



Data Source: Environment Canada - “National Climate Data And information Archive” – <http://www.climate-charts.com/Countries/Canada.html#BC>

CULTURE

TOP ANNUAL EVENTS

Top Events	Date(s)
Library Strawberry Festival	May
Farner's Market	June, July, August
Father's Day Fishing Derby	June
Jam at the Dam Music Festival	July
Hudson's Hope Fall Fair	August
Heritage Days	July, August

Data Source: District of Hudson's Hope – www.dist.hudsons-hope.bc.ca

CULTURAL PLACES AND AMENITIES

Amenity	Number
Number of Museums	1
Number of Theatre Companies	1
Number of Libraries	1
Number of Dance Schools	1
Number of Cultural Centres	1

Data Source: District of Hudson's Hope – www.dist.hudsons-hope.bc.ca



CULTURE AND RECREATION

Amenity	Number
Number of Enclosed Shopping Malls	0
Religion	
<ul style="list-style-type: none"> Hudson's Hope Bible Fellowship (Independent/Interdenominational) Peace Valley Community Church St Peter's Shared Ministry (Anglican, Presbyterian, Lutheran, United) 	

Data Source: District of Hudson's Hope – www.dist.hudsons-hope.bc.ca



RECREATIONAL AMENITIES WITHIN 2 HOURS

Amenity	Activity
FSJ Curling Rink	Curling
Pomeroy Sports Centre	Sports, skating, hockey
North Peace Leisure Pool	Swimming
Bullhead Mountain	Hiking
Fort St John Arena & Children's Arena	Skating, hockey
Fort St John Walking Trails	Outdoors, sports
Hudson's Hope Arena	Skating
Hudson's Hope Outdoor Pool	Swimming
Jamieson Woods Nature Preserve	Outdoors
Cameron Lake Outdoor Education Site	Education
Cameron Lake, Dinosaur Lake, Alwin Holland and King Gething Parks	Camping
Taylor Curling Rink	Curling
Taylor Hall	Various types of events including Archery
Taylor Golf Course	Golf
Peace Island Park	Camping, Tourism activities, Boating
North Peace Leisure Pool	Swimming
FSJ Curling Rink	Curling
Fort St John Arena & Children's Arena	Skating, hockey
Swimming pools- Dawson Creek & Taylor	Swimming
Charlie Lake Golf Course	Golf
Links Golf Course	Golf
Dawson Creek Golf Course	Golf
Farmington Golf Course	Golf
Rotary Campground	Camping
Outdoor Skateboard Park	Skateboarding
Bullhead Mountain Curling Club	Curling

Data Source: District of Hudson's Hope – www.dist.hudsons-hope.bc.ca



HEALTH

HOSPITALS AND HEALTH CENTRES

Diagnostic and Treatment Centre	Hudson's Hope Health Centre
Number of Beds	2
Pharmacy	1
Assisted Living Facilities	0
Contact	10309 100 th Street, Box 599 Hudson's Hope, BC V0C 1V0 Phone: (250) 783-9991

Data Source: District of Hudson's Hope – www.dist.hudsons-hope.bc.ca

Hospital	Fort St. John Regional Hospital
Teaching Hospital	Yes
Number of Beds	55 (+ 123 in residential facility)
Outpatient Clinic	Yes
	To open in 2012

Hospital	Fort St. John Hospital and Health Centre
Teaching Hospital	Yes
Number of Beds	44
Outpatient Clinic	Yes
Contact	9636 100 th Ave Fort St John, BC V1J 1Y3 (250)262-5200



PHYSICIANS AND DENTISTS

Health Providers	Number
Physicians	0
Dentists	0
Ratio Physicians per 1000	1: 1000
Ratio Dentists per 1000	0: 1000

Data Source: District of Hudson's Hope – www.dist.hudsons-hope.bc.ca

Note: The District of Hudson's Hope is supported by five doctors on a rotational basis, an RN, Home Care Nurse, Lab Technologist, X-Ray Technologist and visiting specialists: Physiotherapist, Public Health Nurse, Mental Health Practitioner, Massage Therapist and a Respiratory Therapist.



Sandra Lemmon
Economic Development officer

North Peace Economic Development Commission
9325 100th St, Fort St John BC V1J 4N4 Phone (250)785-5969
Email: invest@npedc.ca

www.npedc.ca

John Locher
Interim Chief Administrative Officer

District of Hudson's Hope
Box 330, 9904 Dudley Dr, Hudson's Hope, BC V0C 1V0 Phone: (250)783-9901
Email: cao@hudsonshope.ca

www.dist.hudsons-hope.bc.ca



Northern Development Initiative Trust
Contact for information on financial
incentives for manufacturing companies

www.northerndevelopment.bc.ca



Invest BC
Contact for investor site selection
and expansion services.

www.investbc.com