



SNOW AND ICE CONTROL POLICY

Department	Public Works		
Adopted by Council	December 15, 2025	Resolution Number	
Revised by Council		Resolution Number	

PURPOSE

- 1.1 The purpose of this Policy is to provide for the safe passage of vehicles and pedestrians by delivering snow and ice control on municipal roads and sidewalks in a timely, prioritized, and resource-efficient manner.
- 1.2 This policy is adopted by Council and administered by the Director.

SCOPE

- 2.1 This policy applies to municipal roads, lanes, and designated sidewalks within the District.
- 2.2 This policy does not apply to provincial highways or roads maintained by the Province or its contractor.
- 2.3 MoTT is responsibility for Highway 29, 520 Road (Canyon Drive), 715 & 118 Roads (Beryl Prairie), 190 Road (Dunlevy), and 116 Road (Farrell Creek).

GUIDING PRINCIPLES

- 3.1 Operations scale with storm severity and duration, temperature, and available personnel and equipment.
- 3.2 Overtime is minimized where practicable.
- 3.3 Some roads have steeper grades or are historically hazardous; these receive special attention.
- 3.4 Service target is Passable Condition, not bare pavement.
- 3.5 Resources are allocated first to higher-priority routes and essential services.

DEFINITIONS

- 4.1 In this Policy:
 - a. **Compacted Snow Surface** means snow that has accumulated on the roadway surface and is packed by traffic or leveled by snowplows.
 - b. **Director** means the Director of Public Works or Designate;
 - c. **District** means the District of Hudson's Hope;

- d. **Ice Control** means the control of the build up of packed snow or ice on roadways using equipment, abrasive materials, or chemicals;
- e. **MoTT** means the Ministry of Transportation and Transit;
- f. **Passable Condition** means the roadway is passable for vehicles with proper winter tires and driving according to the conditions (driving cautiously: defensively and at a speed appropriate for slippery roads, which is not necessarily the speed limit and could be significantly less than the posted speed limit); this does not mean bare pavement and some accumulations of snow or ice may be present.
- g. **Snow Plowing** means moving or pushing accumulated snow using graders, loaders, plow trucks, or skid-steers. Bare pavement is not the objective.
- h. **Snow Removal** means windrowing, loading, and hauling snow to an approved disposal site when storage is insufficient.
- i. **Sanding** means the application of treated or dry sand to roadways to improve traction.

POLICY

Triggers to Commence Operations

- 5.1. **Snowfall Trigger** - Snow clearing commences at 10 cm (4") of accumulation from a single storm, or earlier at the Director's discretion for safety.
- 5.2. **Ice Control Trigger** -Initiated when forecast or observed conditions create hazardous traction (e.g. freeze-thaw, rain-on-snow, steep grades).

Service Levels & Standards

- 6.1. **Target plowed width:** Minimum 5.0 m where practical.
- 6.2. **Road surface target:**
 - a. Priority 1 & 2 roads: Maintain to Passable Condition.
 - b. Priority 3 roads: Compacted Snow Surface acceptable.

Sanding

- 6.3. Sanding will only take place on hills, curves, school zones, 30 m before stop signs, and any documented hazard areas.

Route Priorities

- 7.1 The Director maintains detailed route maps (Schedule A – Snow and Ice Control Priority Plow Routes sheets 1 to 4). As a guide:

- a. **Priority 1 (highest):** Downtown routes and serving schools, RCMP Detachment, Health Centre, Fire Hall, municipal office parking lot; and Beryl Prairie and Lynx Creek subdivisions.
- b. **Priority 2:** Downtown routes to business areas and residences; Thompson and Jamieson subdivisions; other developed municipal streets.
- c. **Priority 3:** Municipal aerodrome and rural roads constructed to municipal standards; parking lots for the Community Hall, Curling Club, Library, and New Horizons.

Snow Plowing

- 8.1 Start when Section 5 triggers are met.
- 8.2 Maintain Priority 1 to Passable Condition during active events, then proceed to Priority 2 (Passable Condition) and Priority 3 (Compacted).
- 8.3 Where storage limits impair visibility or access, consider Snow Removal.
- 8.4 Temporary closures may be used where roads are unsafe or impassable until resources are available.

Snow Removal

- 8.5 Snow Removal is performed only where on-street storage is inadequate for reasonable vehicle or pedestrian movement or drainage, prioritized per route priorities.

Ice Control

- 8.6 Initiate per Section 5.
- 8.7 Focus on hills, curves, intersections, school zones, and documented hazard locations.
- 8.8 Adjust application to temperature and surface conditions.

Sidewalks

- 9.1 The District's priority for winter operations is the road network.
- 9.2 The District clears sidewalks bordering municipal-owned or operated property and key pedestrian links on a priority basis as staffing, equipment, and weather conditions allow.
- 9.3 Other sidewalk responsibilities are per applicable District bylaws.
- 9.4 Unpaved trails are not subject to snow or ice control unless specifically designated.

Special Provisions

- 10.1 **Fire Hydrants:** During regular business hours and when resources permit, accumulated snow is cleared to maintain access to fire hydrants.

- 10.2 **Limited Turn-Arounds:** Where municipal vehicles lack room to turn safely, adjacent owners may be asked for temporary permission to use private accesses.
- 10.3 **Driveway Windrows:** Plow trucks cannot avoid creating a ridge of snow across driveway entrances. Residents should place shoveled snow on the left side of the driveway (when facing the house) to reduce re-deposition.
- 10.4 **Private Property & Lots:** Businesses and institutions are responsible for their parking areas and private accesses. Do not deposit private snow onto municipal road allowances.

Public Conduct During Operations

- 11.1 Residents can assist by:
- a. not storing unused vehicles/trailers/boats on streets or boulevards;
 - b. avoiding on-street parking during snowfalls and obeying temporary No Parking signs;
 - c. not pushing driveway snow onto traveled lanes or around hydrants;
 - d. leaving safe following distances behind sanders and plow trucks.

Communications & Reporting

- 12.1 The public and staff are encouraged to promptly report hazardous icy conditions or blocked routes on Priority 1 and 2 corridors to Public Works.
- 12.2 The Director or designate will assess reported locations and schedule treatment consistent with this policy and priorities.

Record-Keeping

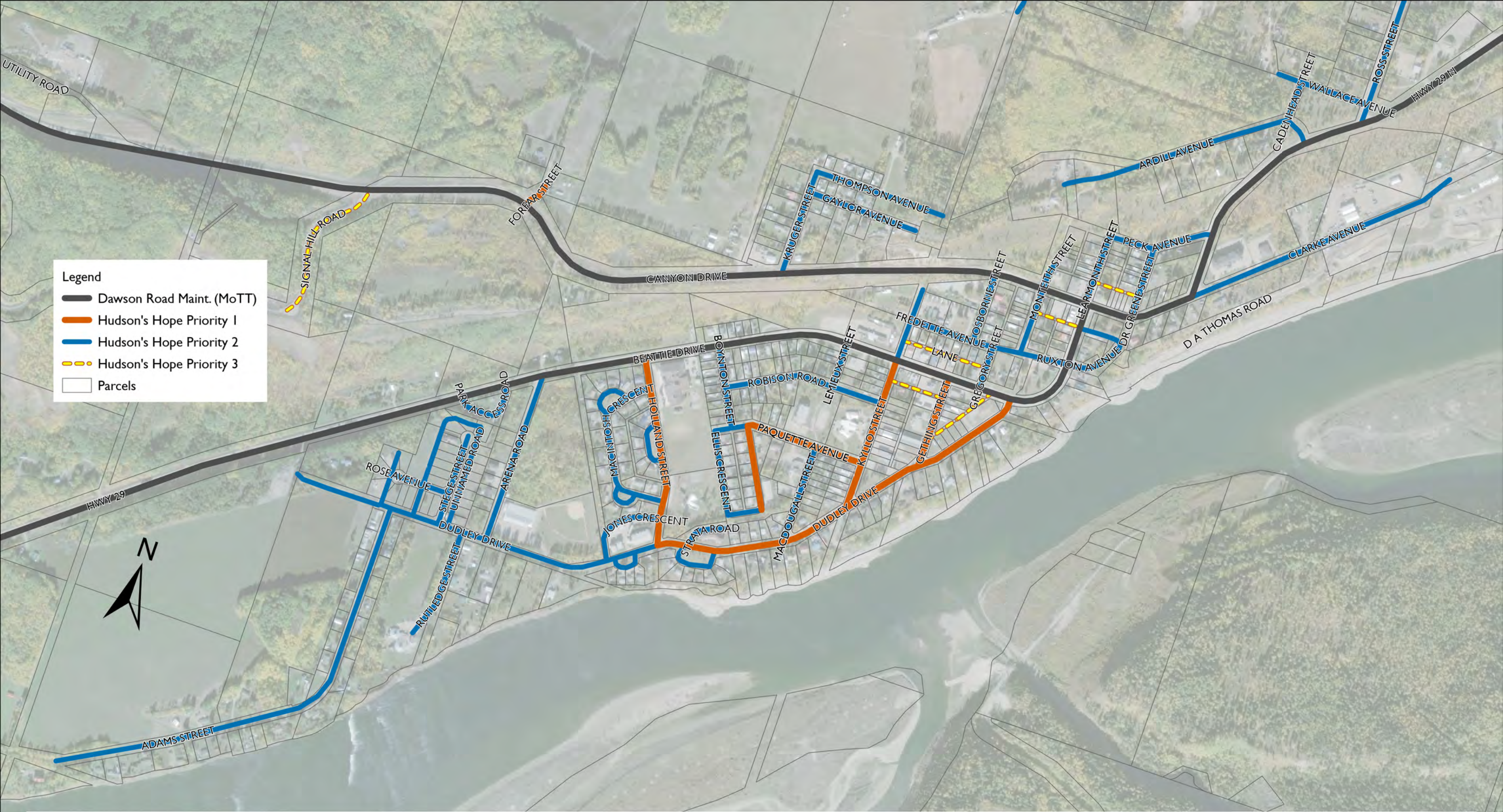
- 13.1 Public Works will keep written or electronic records of:
- a. Time, equipment, and operators for plowing, removal, sanding, and ice control;
 - b. Public complaints and actions taken.

Resources & Budget

- 14.1 Service levels depend on available budget, staffing, equipment, and concurrent duties (e.g. garbage collection).
- 14.2 The Director may reallocate resources and sequence work to manage risks while minimizing overtime.

Review

- 15.1 This policy and Schedule A will be reviewed annually before winter operations.



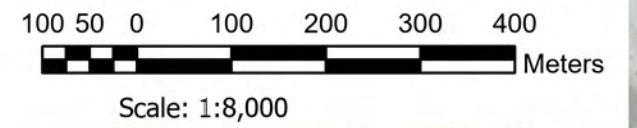
- Legend**
- Dawson Road Maint. (MoTT)
 - Hudson's Hope Priority 1
 - Hudson's Hope Priority 2
 - Hudson's Hope Priority 3
 - Parcels








SNOW AND ICE CONTROL PRIORITY PLOW ROUTES

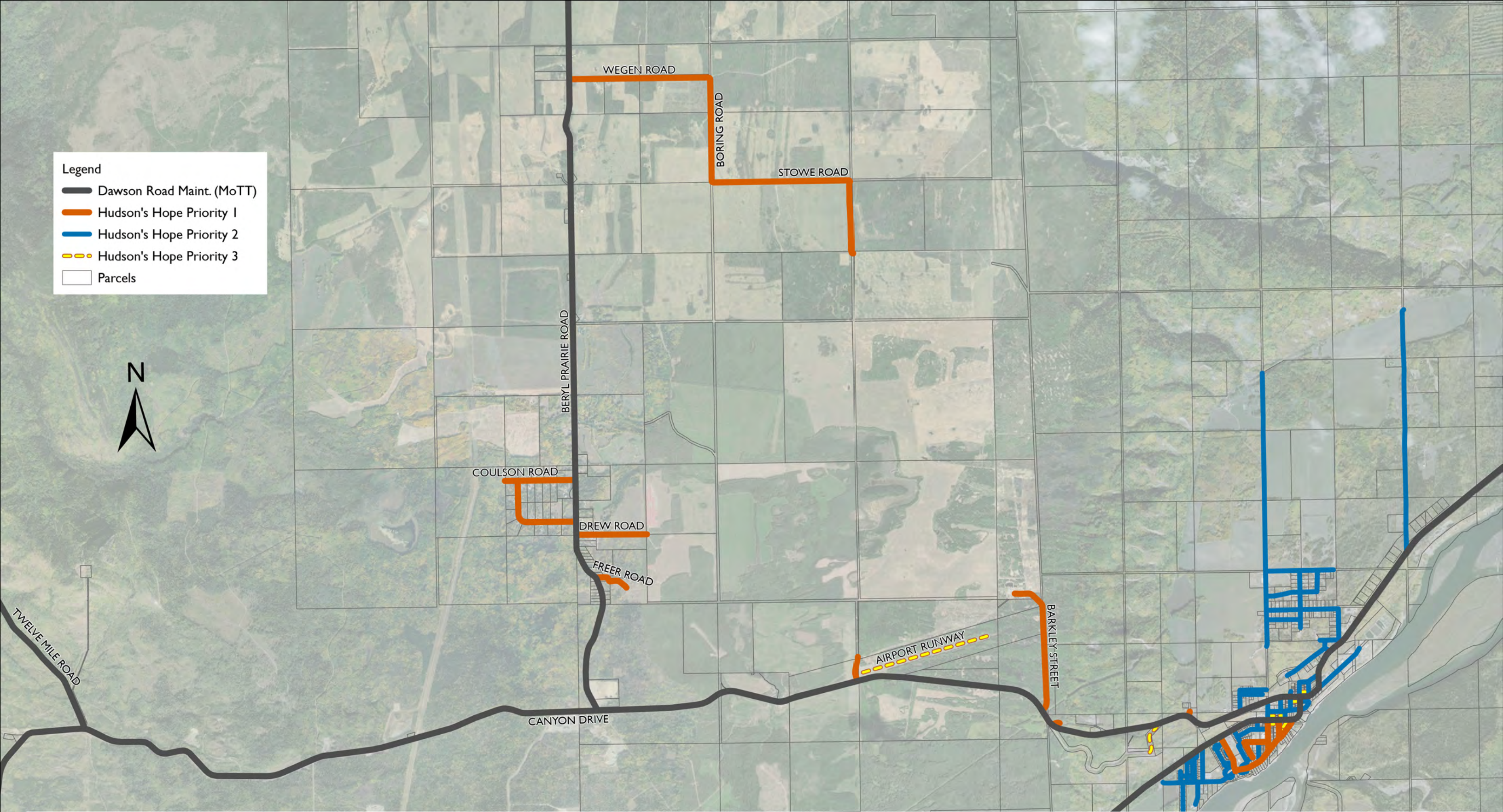
Downtown

Schedule A to Snow and Ice Control Policy No. xx
Revised: 2025-12-01
Sheet 1 of 4



Legend

-  Dawson Road Maint. (MoTT)
-  Hudson's Hope Priority 1
-  Hudson's Hope Priority 2
-  Hudson's Hope Priority 3
-  Parcels





SNOW AND ICE CONTROL PRIORITY PLOW ROUTES

Beryl Prairie

Schedule A to Snow and Ice Control Policy No. xx
Revised: 2025-12-01
Sheet 2 of 4



Legend

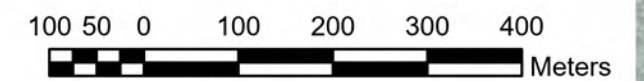
-  Dawson Road Maint. (MoTT)
-  Hudson's Hope Priority 1
-  Hudson's Hope Priority 2
-  Hudson's Hope Priority 3
-  Parcels



SNOW AND ICE CONTROL PRIORITY PLOW ROUTES

Lynx Creek Subdivision

Schedule A to Snow and Ice Control Policy No. xx
Revised: 2025-12-01
Sheet 3 of 4



Scale: 1:8,000

Legend

- Dawson Road Maint. (MoTT)
- Hudson's Hope Priority 1
- Hudson's Hope Priority 2
- Hudson's Hope Priority 3
- Parcels



SNOW AND ICE CONTROL PRIORITY PLOW ROUTES Jamieson Subdivision

Schedule A to Snow and Ice Control Policy No. xx
Revised: 2025-12-01
Sheet 4 of 4



Scale: 1:8,000

